

The College of New Jersey School of Education

PROFESSIONAL DEVELOPMENT SCHOOL NETWORK
FALL CONFERENCE

DYSLEXIA: RESEARCH INTO PRACTICE



OCTOBER 10, 2014
8:15 a.m. — 3:15 p.m.
EDUCATION BUILDING

Registration is now open.
Limited space,
please register early.

Professional Development
Hours will be awarded.

Robert J. Bartoletti, EdD

Director



July, 2014

Dear Colleague:

The College of New Jersey Professional Development School Network is proud to welcome you to our fall professional development conference, “Dyslexia: Research into Practice”. Based on the New Jersey Department of Education regulations, staff members working in our public schools are required to annually complete a minimum of two hours of professional development instruction on the screening, intervention, accommodation and use of technology for students with dyslexia. Our conference will address the NJ Department of Education regulations in addition to sharing classroom resources on the subject of dyslexia with all conference participants.

Dr. Kathleen Rotter, Associate Professor, Department of Special Education and Language and Literacy at TCNJ, will be featured as the keynote speaker. Dr. Rotter will provide an overview of the current research on the topic of dyslexia and she will be joined by Dr. Brian Friedlander, Anne Marie Harshaw, Allison Pankowski, and Donna Siani who will lead the break-out sessions. Every session will offer a balanced mix of insightful content, best practices, and guided audience interaction that will be engaging motivational and informative. Participants in each session will leave with practical techniques and ideas to use within their classrooms or programs. Participants may also use the information presented for “turn key” training in their schools or districts.

In addition to enjoying a powerful day of professional development, the Fall Conference offers you an unparalleled opportunity to meet and network with colleagues from other school districts and professionals who share your passion for teaching and learning.

I look forward to welcoming you to our beautiful campus on October 10, 2014.

Sincerely yours,

A handwritten signature in black ink that reads "Robert J. Bartoletti". The signature is written in a cursive, flowing style.

Robert J. Bartoletti, EdD
Director

P.S. PDSN teachers and administrators will receive a discounted registration rate.

Schedule of SESSIONS

8:15 – 8:45 a.m.

Registration, Coffee and Conversation

8:45 – 9:45 a.m.

Keynote Address – Kathleen Rotter, EdD

10:00 – 11:00 a.m.

Diagnosis

Donna Siani, MEd
Allison Pankowski, MEd

Remediation

Anne Marie Harshaw, MA

11:15 a.m. – 12:15 p.m.

Accommodation

Kathleen Rotter, EdD

Technology

Brian Friedlander, EdD

12:15 – 1:00 p.m. — LUNCH

1:00 – 2:00 p.m.

Technology

Brian Friedlander, EdD

Diagnosis

Donna Siani, MEd
Allison Pankowski, MEd

2:15 – 3:15 p.m.

Remediation

Anne Marie Harshaw, MA

Accommodation

Kathleen Rotter, EdD

Conference PRESENTERS



Kathleen Rotter EdD

Kathleen Rotter is an Associate Professor in Special Education, Language and Literacy, The School of Education. She received her B.S. from TCNJ and her Master in Education and Doctorate from Rutgers University. She has worked in the field of special education since 1972 and has been a special education teacher, a Learning Disability Teacher Consultant, and a Director of Special Services. Rotter currently teaches undergraduate and graduate courses focusing on the education of students with dyslexia and other learning disabilities as well as the use of Orton Gillingham literacy techniques. She has provided numerous district workshops on these topics. She has also published articles focusing on simple techniques to enhance the success of students with learning disabilities such as dyslexia within the classroom setting. Rotter is also the coordinator of TCNJ's Dyslexia Center.

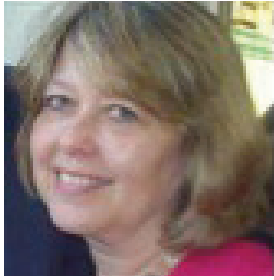


Brian Friedlander EdD

Brian Friedlander is a school psychologist with expertise in the area of assistive technology. Friedlander has a passion for using all kinds of technology in his professional work. He has taught thousands of educators how to utilize the tools and methodologies of mind mapping to improve learning in the classroom. As an Associate Professor of Education at the College of St. Elizabeth in Morristown, N.J., he coordinates Graduate Programs in Special Education and teaches graduate courses in assistive technology. He maintains a consulting and private practice in the area of assistive technology working with schools and parents to find innovative solutions to support student learning. Friedlander consults to many school districts in N.J. and is available for workshops, training and presentations. He is the author of *Assistive Technology: What Every Educators Needs to Know* and maintains a blog at <http://assistivetek.blogspot.com>. He is the subject matter expert in a recently released DVD, *Assistive Technology: Powerful Solutions for Success*, which is distributed by National Professional Resources, Inc., and recently co-authored, *iPad™: Enhancing Learning & Communication for Students with Special Needs*, a laminated reference guide also available from National Professional Resources, Inc.

"I, myself, was always recognized ... as the "slow one" in the family. It was quite true, and I knew it and accepted it. Writing and spelling were always terribly difficult for me. My letters were without originality. I was ... an extraordinarily bad speller and have remained so until this day."

— Agatha Christie



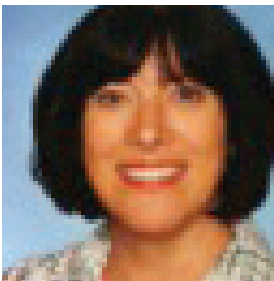
Anne Marie Harshaw MA

Anne Marie Harshaw has a B.S. in Elementary Education from the University of Oregon and an M.A. in Learning Disabilities from Teachers College, Columbia University. She is at the Certified Level in Orton-Gillingham training and working toward becoming a Fellow in O-G. She has extensive teaching experience having taught students from the age of 9-19 for more than 18 years in public and private school settings in the resource room as well as in self-contained classrooms. She was also a language arts teacher. Harshaw is currently the Language Arts Coordinator at the Bridge Academy, an approved private school serving students with dyslexia and other learning disabilities. In that position, she has also helped supervise TCNJ college students in a tutoring practicum for a graduate course in special education.



Allison Pankowski MEd

Allison Pankowski completed her undergraduate work in Deaf Education and Elementary Education at Flagler College in St. Augustine, Florida. She received her Master in Education degree in Special Education from Rutgers University in New Jersey. Pankowski completed her post-graduate work at The College of New Jersey to obtain her Learning Disabilities Teacher Consultant (LDTC) certificate. She is currently pursuing a second Master in Education degree in Educational Leadership at The College of New Jersey. She has worked in the special education field since 1995 in New Jersey public schools. During that time she has held a variety of positions including in-class support co-teacher, resource center instructor and self-contained teacher.



Donna Siani MEd

Donna Siani has been a Learning Consultant for the past twenty-two years. She graduated from Seton Hall University with certifications in preschool, elementary and special education. While teaching, Siani obtained her Master's Degree in Special Education from TCNJ. She earned her Master's Degree in Psychometrics from Abilene Christian University and is a certified Educational Diagnostician. In 1999, she began working at the Hunterdon Medical Center performing private and second opinion Educational Evaluations. She has worked closely with neurodevelopmental pediatricians, speech therapists and psychologists to determine eligibility and educational programming for children in public and private school settings. Siani has also taught graduate level courses at TCNJ and Rider University for the past several years and has supervised Learning Consultants. She is especially interested in early language development, literacy, specialized reading programs and the use of technology for student success. Currently, Siani is a Learning Consultant with the Montgomery Township School District.



PDSN School Districts

Bordentown Regional
School District

Burlington County
Institute of Technology

City of Burlington
Public Schools

Cranbury School District

East Amwell Township School

Ewing Township
School District

Hamilton Township
School District

Hillsborough Township
School District

Hopewell Valley Regional
School District

Hunterdon Central Regional
High School District

Kingwood School District

Lawrence Township
School District

Marie Katzenbach School
for the Deaf

Montgomery Township
School District

Robbinsville Township
School District

Somerset Hills School District

Somerville School District

South Brunswick
School District

South Hunterdon Regional
School District

Registration FORM

DUE NO LATER THAN SEPTEMBER 26, 2014

Name: _____ Position: _____

Email Address (required): _____

School District: _____

School Name: _____

School Phone: _____

School Address: _____

City: _____ State: _____ ZIP: _____

For multiple registrations, please list the names, email addresses, and phone numbers for each registrant.

Registration Fees

PDSN School District Rate: \$50.00/Person

NON-PDSN Registrant: \$75.00/Person

☐ Check Enclosed

☐ Purchase Order Enclosed

Easy Ways to Register:

Fax: 609.637.5196

Phone: Josephine Miller
609.771.2261

Mail: Josephine Miller
The College of New Jersey
PO Box 7718
Ewing, NJ, 08628

Event Parking

Upon entering the campus, turn right on Metzger Drive and proceed to the Visitor Parking Lot 5, 6 or 7 adjacent to the athletic fields. We will send you a parking permit upon receipt of your registration material. The School of Education Building is located at the opposite side of the campus. It will be a ten minute walk to the building.

Recent legislation has *mandated training* for school staff members with regard to dyslexia.

Join us to explore the *critical areas* identified by this legislation.

Learn how to address the *unique needs* of students with dyslexia.

Gather materials for *ideas and training* in your schools.

Registration is now open.

Limited space, please register early.

Professional Development Hours will be awarded.

